



Product Specifications

Backing	Nexus® Modular
Dye Method	Solution Dyed
Fiber Type	APEX SDP® Polyester
Face Weight	16 oz./sy (543 grams/m2)
Pile Density	7362 oz./y3 (272.99 kg/m3)
Pattern Repeat	N/A
Gauge	1/12 (4.72 rows/cm)
Standard Size	24" x 24" approx. (60.96cm x 60.96cm)
Standard Adhesive	Commercialon Premium Modular Adhesive
Optional Adhesive	TileTabs
Standard Warranties	Nexus Modular Commercialon Adhesive for Modular Carpet & LVT APEX® SDP Polyester Fiber
Optional Warranties	Commercialon High Moisture Adhesive for Modular Carpet and LVT Tile Tabs

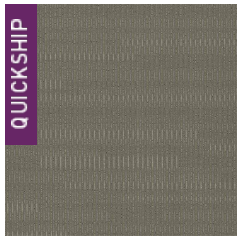
Special Technologies

Environmental Specifications & Tests

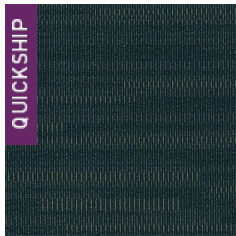
NSF 140:	Gold Certified
Total Recycled Content	42.95%
Flooring Radiant Panel	Class 1
Smoke Density	Less than 450 flaming (ASTM E 662)
Static Test	Less than 4 kv (AATCC-134)
ADA Compliance	Compliant For Accessible Routes
Pill Test	Yes
Lightfastness	Yes

Installation Methods: Quarter Turn

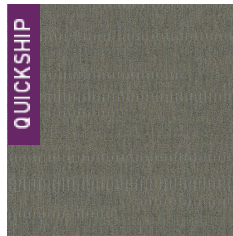
Colorways



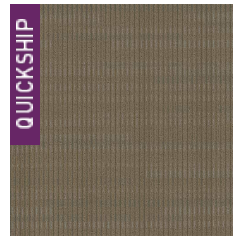
2759 Arid Gray



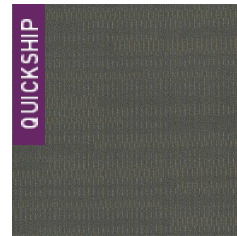
2760 Desert Sp...



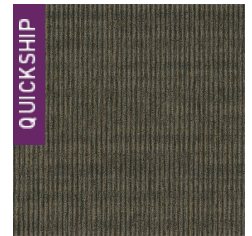
2761 Mica Dust



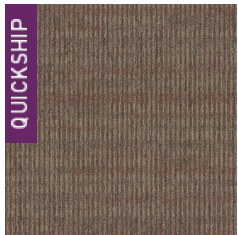
2762 Camelback



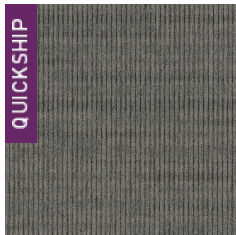
2763 Silver Mine



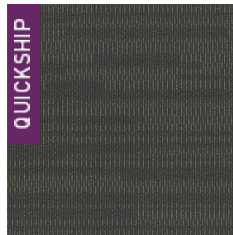
2764 Caravan



2765 Indian Paint



2766 Night Sky



2767 Obsidian