



Product Specifications

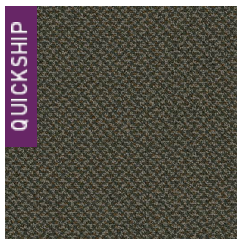
Construction	Level Loop
Backing	Woven Polypropylene
Dye Method	Solution Dyed
Fiber Type	APEX SDP® Polyester
Face Weight	20 oz./sy (678 grams/m ²)
Pile Density	7427 oz./y ³ (275.40 kg/m ³)
Pattern Repeat	.60" (w) x .10" (l) approx. (1.52cm x .25cm)
Gauge	1/10 (3.94 rows/cm)
Standard Width	12 ft 3.66 m
Standard Adhesive	Commercialon Premium Carpet Adhesive
Standard Warranties	Standard Back APEX® SDP Polyester Fiber
Optional Warranties	iLoc® Backing

Special Technologies

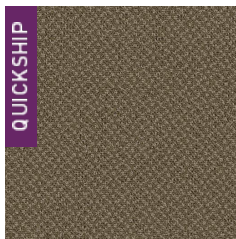
Environmental Specifications & Tests

NSF 140:	N/A Certified
Total Recycled Content	0%
Flooring Radiant Panel	Class 1
Smoke Density	Less than 450 flaming (ASTM E 662)
Static Test	Less than 3 kv (AATCC-134)
ADA Compliance	Compliant For Accessible Routes
Pill Test	Yes
Lightfastness	Yes

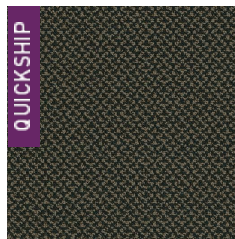
Colorways



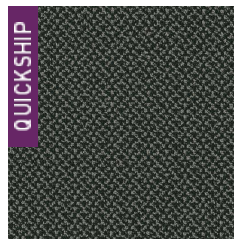
3087 Bandit



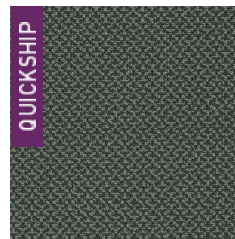
3088 Desperado



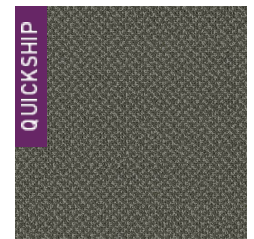
3089 Fugitive



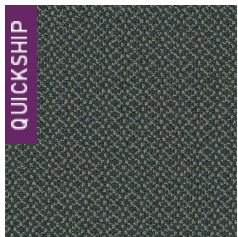
3090 Hoodlum



3091 Marauder



3092 Outcast



3093 Hooligan



3094 Mobster