



**Product Specifications**

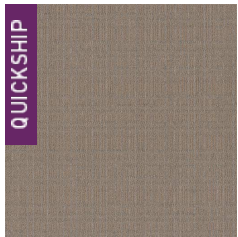
<b>Construction</b>	Patterned Loop
<b>Backing</b>	Woven Polypropylene
<b>Dye Method</b>	Solution Dyed
<b>Fiber Type</b>	APEX SDP® Polyester
<b>Face Weight</b>	18 oz./sy (610 grams/m <sup>2</sup> )
<b>Pile Density</b>	6527 oz./y <sup>3</sup> (242.03 kg/m <sup>3</sup> )
<b>Pattern Repeat</b>	3.00" (w) x 5.50" (l) approx. (7.62cm x 13.97cm)
<b>Gauge</b>	1/10 (3.94 rows/cm)
<b>Standard Width</b>	12 ft 3.66 m
<b>Standard Adhesive</b>	Commercialon Premium Carpet Adhesive
<b>Standard Warranties</b>	<b>Standard Back</b> <b>APEX® SDP Polyester Fiber</b>
<b>Optional Warranties</b>	<b>iLoc® Backing</b>

**Special Technologies**

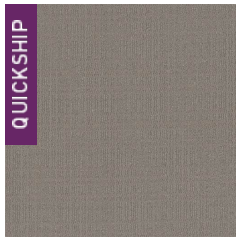
**Environmental Specifications & Tests**

<b>NSF 140:</b>	N/A Certified
<b>Total Recycled Content</b>	0%
<b>Flooring Radiant Panel</b>	Class 1
<b>Smoke Density</b>	Less than 450 flaming (ASTM E 662)
<b>Static Test</b>	Less than 3 kv (AATCC-134)
<b>ADA Compliance</b>	Compliant For Accessible Routes
<b>Pill Test</b>	Yes
<b>Lightfastness</b>	Yes

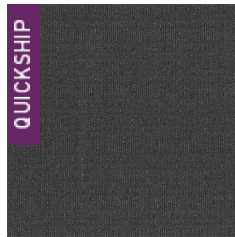
Colorways



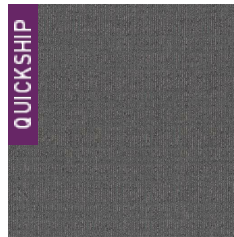
2784 Sahara



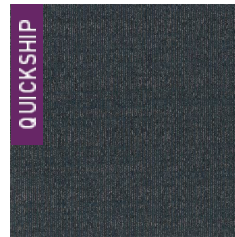
2785 Gobi



2786 Karakum



2787 Mojave



2788 Sonoran



2789 Basin



2790 Namib