



Product Specifications

Construction	Patterned Loop
Backing	Nexus® Modular
Dye Method	Solution Dyed
Fiber Type	APEX SDP® Polyester
Face Weight	16 oz./sy (543 grams/m2)
Pile Density	6127 oz./y3 (227.19 kg/m3)
Pattern Repeat	N/A
Gauge	1/12 (4.72 rows/cm)
Standard Size	24" x 24" approx. (60.96cm x 60.96cm)
Standard Adhesive	Commercialon Premium Modular Adhesive
Optional Adhesive	TileTabs
Standard Warranties	Nexus Modular Commercialon Adhesive for Modular Carpet & LVT APEX® SDP Polyester Fiber
Optional Warranties	Commercialon High Moisture Adhesive for Modular Carpet and LVT Tile Tabs

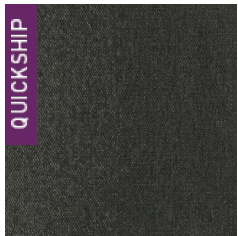
Special Technologies

Environmental Specifications & Tests

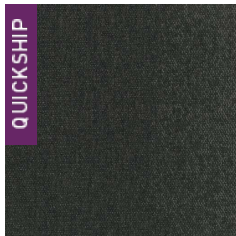
NSF 140:	Gold Certified
Total Recycled Content	42.95%
Flooring Radiant Panel	Class 1
Smoke Density	Less than 450 flaming (ASTM E 662)
Static Test	Less than 4 kv (AATCC-134)
ADA Compliance	Compliant For Accessible Routes
Pill Test	Yes
Lightfastness	Yes

Installation Methods: Brick, Quarter Turn, Monolithic, Ashlar

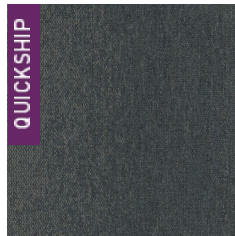
Colorways



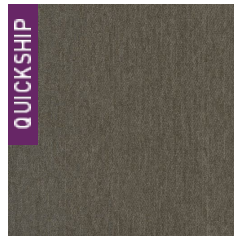
3463 Mesmeriz...



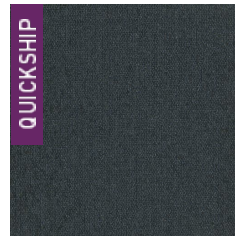
3464 Trance



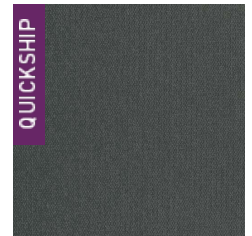
3465 Soothing



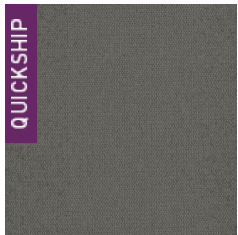
3466 Numbing



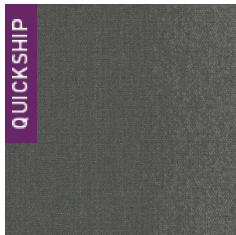
3467 Spellbound



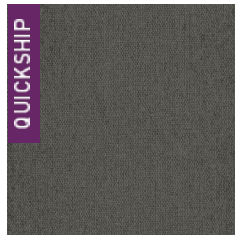
3468 Mesmeric



3469 Soporific



3470 Bewitch



3471 Nirvana