



Product Specifications

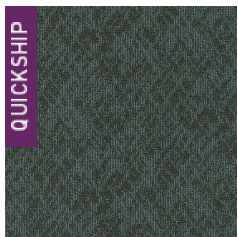
Construction	Patterned Loop
Backing	Woven Polypropylene
Dye Method	Solution Dyed
Fiber Type	APEX SDP® Polyester
Face Weight	20 oz./sy (678 grams/m ²)
Pile Density	6063 oz./y ³ (224.82 kg/m ³)
Pattern Repeat	24.00" (w) x 15.00" (l) approx. (60.96cm x 38.10cm)
Gauge	1/12 (4.72 rows/cm)
Standard Width	12 ft 3.66 m
Standard Adhesive	Commercialon Premium Carpet Adhesive
Standard Warranties	Standard Back APEX® SDP Polyester Fiber
Optional Warranties	iLoc® Backing

Special Technologies

Environmental Specifications & Tests

NSF 140:	N/A Certified
Total Recycled Content	0%
Flooring Radiant Panel	Class 1
Smoke Density	Less than 450 flaming (ASTM E 662)
Static Test	Less than 4 kv (AATCC-134)
ADA Compliance	Compliant For Accessible Routes
Pill Test	Yes
Lightfastness	Yes

Colorways



3534 Redirect



3535 Domain



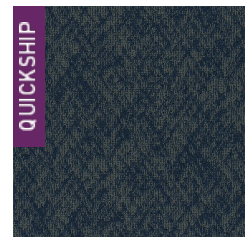
3536 Filter



3537 Search



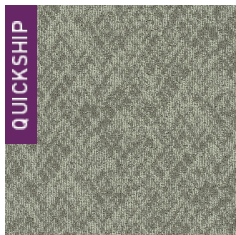
3538 Hosting



3539 Image Ov...



3540 Wireframe



3541 Meta Tag



3542 Cookies