



Product Specifications

Construction	Textured Loop
Backing	Woven Polypropylene
Dye Method	Solution Dyed
Fiber Type	APEX SDP® Polyester
Face Weight	20 oz./sy (678 grams/m ²)
Pile Density	8181 oz./y ³ (303.36 kg/m ³)
Pattern Repeat	.40" (w) x 1.20" (l) approx. (1.02cm x 3.05cm)
Gauge	1/10 (3.94 rows/cm)
Standard Width	12 ft 3.66 m
Standard Adhesive	Commercialon Premium Carpet Adhesive
Standard Warranties	Standard Back APEX® SDP Polyester Fiber
Optional Warranties	iLoc® Backing

Special Technologies

Environmental Specifications & Tests

NSF 140:	N/A Certified
Total Recycled Content	0%
Flooring Radiant Panel	Class 1
Smoke Density	Less than 450 flaming (ASTM E 662)
Static Test	Less than 3 kv (AATCC-134)
ADA Compliance	Compliant For Accessible Routes
Pill Test	Yes
Lightfastness	Yes

Colorways



3238 Great Barrier Reef



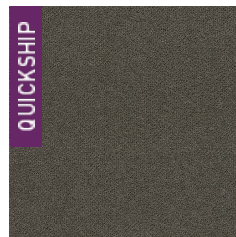
3239 Great Wall



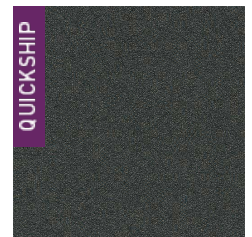
3240 Aurora Borealis



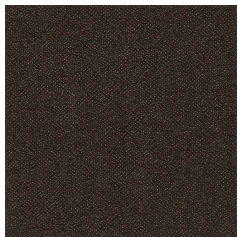
3241 Eiffel Tower



3242 Taj Mahal



3243 Alps



3244 Stonehenge



3245 Yosemite



3246 Grand Canyon