



Product Specifications

| | |
|----------------------------|---|
| Construction | Patterned Loop |
| Backing | Nexus® Modular |
| Dye Method | Solution Dyed |
| Fiber Type | Encore® SD Nylon |
| Face Weight | 15 oz./sy (509 grams/m2) |
| Pile Density | 5033 oz./y3 (186.63 kg/m3) |
| Pattern Repeat | N/A |
| Gauge | 1/12 (4.72 rows/cm) |
| Standard Size | 24" x 24" approx. (60.96cm x 60.96cm) |
| Standard Adhesive | Commercialon Premium Modular Adhesive |
| Optional Adhesive | TileTabs |
| Standard Warranties | Nexus Modular Commercialon Adhesive for Modular Carpet & LVT Encore SD Fiber |
| Optional Warranties | Commercialon High Moisture Adhesive for Modular Carpet and LVT Tile Tabs |

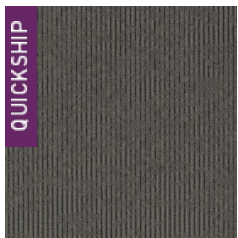
Special Technologies

Environmental Specifications & Tests

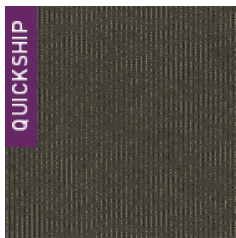
| | |
|-------------------------------|------------------------------------|
| NSF 140: | Gold Certified |
| Total Recycled Content | 43.54% |
| Flooring Radiant Panel | Class 1 |
| Smoke Density | Less than 450 flaming (ASTM E 662) |
| Static Test | Less than 4 kv (AATCC-134) |
| ADA Compliance | Compliant For Accessible Routes |
| Pill Test | Yes |
| Lightfastness | Yes |

Installation Methods: Brick, Quarter Turn, Monolithic, Ashlar

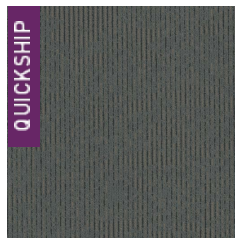
Colorways



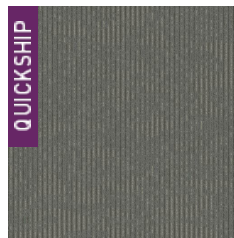
3111 Ethos



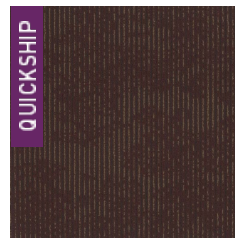
3112 Nucleus



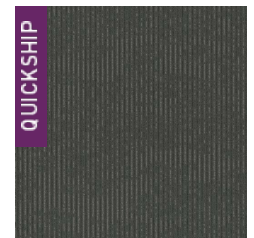
3113 Lifeblood



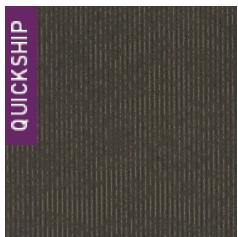
3114 Core



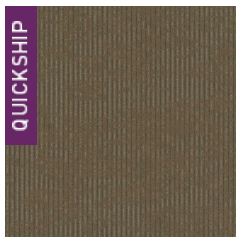
3115 Substance



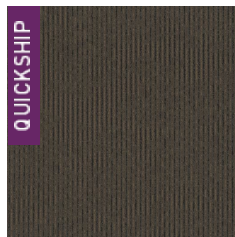
3116 Spirit



3117 Quintesse...



3118 Nature



3119 Soul