



Product Specifications

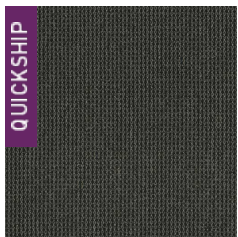
Construction	Textured Loop
Backing	Woven Polypropylene
Dye Method	Solution Dyed
Fiber Type	APEX SDP® Polyester
Face Weight	20 oz./sy (678 grams/m ²)
Pile Density	5020 oz./y ³ (186.14 kg/m ³)
Pattern Repeat	.40" (w) x .50" (l) approx. (1.02cm x 1.27cm)
Gauge	1/10 (3.94 rows/cm)
Standard Width	12 ft 3.66 m
Standard Adhesive	Commercialon Premium Carpet Adhesive
Standard Warranties	Standard Back APEX® SDP Polyester Fiber
Optional Warranties	iLoc® Backing

Special Technologies

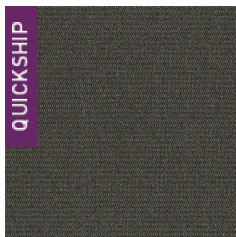
Environmental Specifications & Tests

NSF 140:	N/A Certified
Total Recycled Content	0%
Flooring Radiant Panel	Class 1
Smoke Density	Less than 450 flaming (ASTM E 662)
Static Test	Less than 3 kv (AATCC-134)
ADA Compliance	Compliant For Accessible Routes
Pill Test	Yes
Lightfastness	Yes

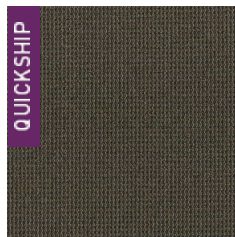
Colorways



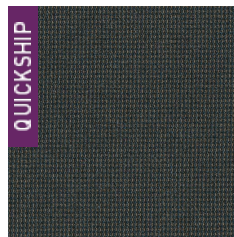
3285 Gravel Ro...



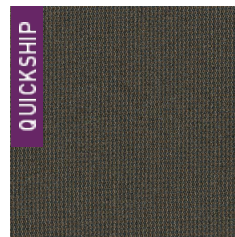
3286 Covered Br...



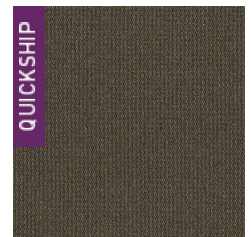
3287 Sharp Cur...



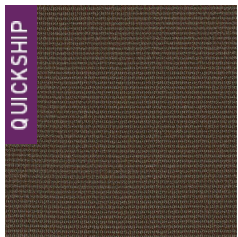
3288 Amazing ...



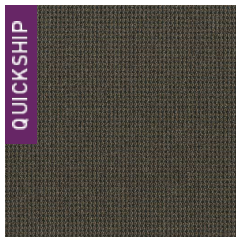
3289 Sunday D...



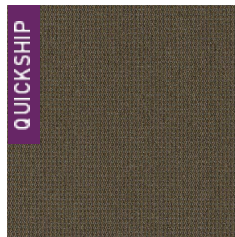
3290 Scenic Trip



3291 Roundabo...



3292 Adventure



3293 Road Less T...